

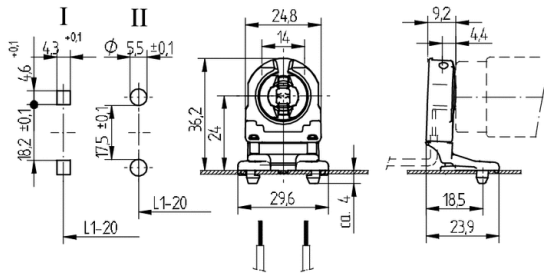
Lampholders and starter holders

26.307.1023

G13 Push in lampholders



Your Connection to Light



colour	pkg.	wt.	part no.
white	500	6 g	26.307.1023.50

Approval: additional cULus (660W /600V)
Wiring: through the body

Lamp centre: 24 mm
Snap in pins for cut-outs \varnothing 5.5 or 4.3 x 4.6 mm

Housing: PC
Rotor: PBT

L1-20: Recommended dimension - The distance between the cut-outs and the tolerance should be governed by the dimensions of the respective lamps and luminaires.

- Snap in pins for IP 40
- A pair of lampholders provides a lamp length tolerance compensation of 3 mm

T 130	Tm110	U out 500 V							
							18 AWG 0.5 -1.0 mm ²	0.5 - 1.1	