

A CLASSIC
IN A NEW LIGHT

RL 70 LE



ENGINEERS OF LIGHT

TUBE LUMINAIRE



ENG

Waldmann



WHAT ACTUALLY MAKES A TRUE CLASSIC?

It needs to set trailblazing new standards. It must achieve popularity across the board. And it must be able to keep reinventing itself. Just like the RL 70 LE from Waldmann, with its functional design, robust construction and powerful light, has been delivering optimum visibility for decades around machine tools.

With its new product variants, the action radius of the luminaire – and the RL 70 LE, is able to perform sterling service away from the machine, in areas such as production and packaging, and in the timber processing, printing, textiles and foodstuff industries.

Now, yet again, this classic is setting a new standard ...



LOOKS LIKE ALWAYS.

Even under close scrutiny, you will see that we have not changed the visual appearance of this tube luminaire. Perhaps because there are some shapes that cannot be improved. And the same applies to a fair number of good functional properties.



Design

Aesthetics that deliver benefits. The distinctive shape of the RL 70 LE emerged very logically – with its function as a starting place – and this has a proven track record over decades. An optimum longitudinal template ensures that every conventional tube luminaire can be replaced without any problem by the RL 70 LE.

Material

Made for arduous working environments. To suit different applications, the RL 70 LE comes in a range of appropriate materials. It is optionally available with a borosilicate tube for wet and oily environments, with an acrylic tube for wet environments affected by powerful jets of water and with polycarbonate tube for areas close to food products.

Performance

Powerful light for continuous operation. Through a combination of ultra-modern LED technology and light-forming foil, the RL 70 LE delivers homogeneous, glare-free light with a wide beam angle and smooth transitions. And zero-maintenance for non-stop operation.

IT'S LIKE NEVER BEFORE.

Good, powerful light for optimum visibility beside the machine tool – we could not improve on this. What we can do however is to ensure that even more locations can benefit from this.

Now also with
230 V mains voltage!



Connection

No matter what voltage you may wish for. Available until now with machine voltage (22–26 V), the RL 70 LE now also comes with a 230 V mains voltage. This is achieved by dispensing with the integrated ballast, enabling this luminaire to deliver homogeneous, glare-free lighting to areas away from the machine tool.

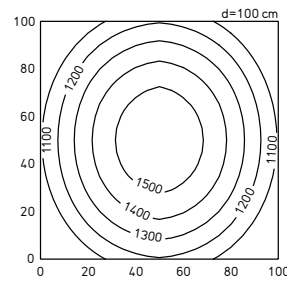
Variety

More variants for even more application options. These new 230 V models coupled with versions made in various different types of material extend the RL 70 LE range to no fewer than 48 product variants. A varied product range to satisfy many wishes. In all modern production environments.

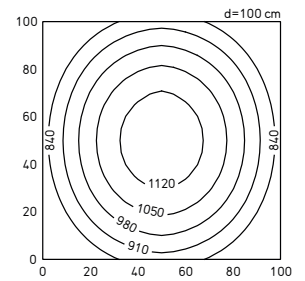
Application

Good machine light, everywhere and at all times. Wherever optimum visibility is called for, the RL 70 LE can provide a suitable answer. Thanks to its many variants, this luminaire can be used in textile, printing and timber processing machines, as well as in production, packaging and foodstuff systems.

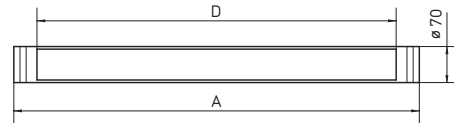
ALL. OR MORE.



Illuminance based on the example of the RL70LE-120 N



Illuminance based on the example of the RL70LE-96 N



24 V MACHINE VOLTAGE

Power	Dimensions	Special feature	E_m / E_{max}^*	Model	Order no.
RL 70 LE borosilicate glass					
12.5 W	A = 370 mm, D = 316 mm	borosilicate glass	242/317 lx ¹	RL70LE-24 N	113279000-00641386
19.0 W	A = 510 mm, D = 456 mm	borosilicate glass	355/462 lx ¹	RL70LE-36 N	113280000-00641389
25.0 W	A = 650 mm, D = 596 mm	borosilicate glass	505/646 lx ¹	RL70LE-48 N	113281000-00641392
31.5 W	A = 790 mm, D = 736 mm	borosilicate glass	624/795 lx ¹	RL70LE-60 N	113282000-00641395
44.0 W	A = 1070 mm, D = 1016 mm	borosilicate glass	837/1042 lx ¹	RL70LE-84 N	113283000-00641398
50.0 W	A = 1210 mm, D = 1156 mm	borosilicate glass	968/1190 lx ¹	RL70LE-96 N	113284000-00641401
RL 70 LE acrylic					
12.5 W	A = 370 mm, D = 316 mm	acrylic	242/317 lx ¹	RL70LE-24 N	113279000-00712020
12.5 W	A = 370 mm, D = 316 mm	acrylic, through-wired	242/317 lx ¹	RL70LE-24 DN	113513000-00722105
19.0 W	A = 510 mm, D = 456 mm	acrylic	355/462 lx ¹	RL70LE-36 N	113280000-00712023
19.0 W	A = 510 mm, D = 456 mm	acrylic, through-wired	355/462 lx ¹	RL70LE-36 DN	113514000-00722108
25.0 W	A = 650 mm, D = 596 mm	acrylic	505/646 lx ¹	RL70LE-48 N	113281000-00712026
25.0 W	A = 650 mm, D = 596 mm	acrylic, through-wired	505/646 lx ¹	RL70LE-48 DN	113515000-00722111
31.5 W	A = 790 mm, D = 736 mm	acrylic	624/795 lx ¹	RL70LE-60 N	113282000-00712029
31.5 W	A = 790 mm, D = 736 mm	acrylic, through-wired	624/795 lx ¹	RL70LE-60 DN	113516000-00722114
44.0 W	A = 1070 mm, D = 1016 mm	acrylic	837/1042 lx ¹	RL70LE-84 N	113283000-00712032
44.0 W	A = 1070 mm, D = 1016 mm	acrylic, through-wired	837/1042 lx ¹	RL70LE-84 DN	113517000-00722117
50.0 W	A = 1210 mm, D = 1156 mm	acrylic	968/1190 lx ¹	RL70LE-96 N	113284000-00712036
50.0 W	A = 1210 mm, D = 1156 mm	acrylic, through-wired	968/1190 lx ¹	RL70LE-96 DN	113518000-00722121
RL 70 LE polycarbonate					
12.5 W	A = 370 mm, D = 316 mm	polycarbonate	242/243 lx ¹	RL70LE-24 N	113279000-00710505
19.0 W	A = 510 mm, D = 456 mm	polycarbonate	355/462 lx ¹	RL70LE-36 N	113280000-00710508
25.0 W	A = 650 mm, D = 596 mm	polycarbonate	505/646 lx ¹	RL70LE-48 N	113281000-00710511
31.5 W	A = 790 mm, D = 736 mm	polycarbonate	624/795 lx ¹	RL70LE-60 N	113282000-00710514
44.0 W	A = 1070 mm, D = 1016 mm	polycarbonate	837/1042 lx ¹	RL70LE-84 N	113283000-00710517
50.0 W	A = 1210 mm, D = 1156 mm	polycarbonate	968/1190 lx ¹	RL70LE-96 N	113284000-00710521

Information about accessories is available on the website: www.waldmann.com

* E_m = medium illuminance; E_{max} = maximum illuminance; ¹ measuring field 100 × 100 cm/measuring distance 100 cm; A = luminaire length; D = light emission length

Powerful light for non-stop operations.

Illuminant:	LED technology
Colour temperature:	neutral white 5000 K
Colour rendering:	Ra > 80
Glare-free:	with Light Forming Technology
Luminaire body:	borosilicate glass, acrylic or PC
LED service life:	> 50000 hrs (L70)
Ambient temperature:	Ta _{max} 40° C
Degree of protection / protection class:	IP67/III
Connection:	via cable gland
Accessories:	various brackets and operating devices for connection to mains voltage



230 V MAINS VOLTAGE

Power	Dimensions	Special feature	E _m / E _{max} [*]	Model	Order no.
RL70LE borosilicate glass					
16.0 W	A = 370 mm, D = 316 mm	borosilicate glass	349/453 lx ¹	RL70LE-30 N	113618000-00746124
24.0 W	A = 510 mm, D = 456 mm	borosilicate glass	525/676 lx ¹	RL70LE-45 N	113620000-00746133
32.0 W	A = 650 mm, D = 596 mm	borosilicate glass	694/887 lx ¹	RL70LE-60 N	113622000-00746145
40.0 W	A = 790 mm, D = 736 mm	borosilicate glass	828/1 047 lx ¹	RL70LE-75 N	113624000-00746154
56.0 W	A = 1 070 mm, D = 1 016 mm	borosilicate glass	1 120/1 386 lx ¹	RL70LE-105 N	113626000-00746164
64.0 W	A = 1 210 mm, D = 1 156 mm	borosilicate glass	1 286/1 573 lx ¹	RL70LE-120 N	113628000-00746173
RL70LE acrylic					
16.0 W	A = 370 mm, D = 316 mm	acrylic	349/453 lx ¹	RL70LE-30 N	113618000-00746116
16.0 W	A = 370 mm, D = 316 mm	acrylic, through-wired	349/453 lx ¹	RL70LE-30 DN	113619000-00746127
24.0 W	A = 510 mm, D = 456 mm	acrylic	525/676 lx ¹	RL70LE-45 N	113620000-00746130
24.0 W	A = 510 mm, D = 456 mm	acrylic, through-wired	525/676 lx ¹	RL70LE-45 DN	113621000-00746136
32.0 W	A = 650 mm, D = 596 mm	acrylic	694/887 lx ¹	RL70LE-60 N	113622000-00746142
32.0 W	A = 650 mm, D = 596 mm	acrylic, through-wired	694/887 lx ¹	RL70LE-60 DN	113623000-00746148
40.0 W	A = 790 mm, D = 736 mm	acrylic	828/1 047 lx ¹	RL70LE-75 N	113624000-00746151
40.0 W	A = 790 mm, D = 736 mm	acrylic, through-wired	828/1 047 lx ¹	RL70LE-75 DN	113625000-00746157
56.0 W	A = 1 070 mm, D = 1 016 mm	acrylic	1 120/1 386 lx ¹	RL70LE-105 N	113626000-00746161
56.0 W	A = 1 070 mm, D = 1 016 mm	acrylic, through-wired	1 120/1 386 lx ¹	RL70LE-105 DN	113627000-00746167
64.0 W	A = 1 210 mm, D = 1 156 mm	acrylic	1 286/1 573 lx ¹	RL70LE-120 N	113628000-00746170
64.0 W	A = 1 210 mm, D = 1 156 mm	acrylic, through-wired	1 286/1 573 lx ¹	RL70LE-120 DN	113629000-00746119
RL70LE polycarbonate					
16.0 W	A = 370 mm, D = 316 mm	polycarbonate	349/453 lx ¹	RL70LE-30 N	113618000-00748823
24.0 W	A = 510 mm, D = 456 mm	polycarbonate	525/676 lx ¹	RL70LE-45 N	113620000-00748826
32.0 W	A = 650 mm, D = 596 mm	polycarbonate	694/887 lx ¹	RL70LE-60 N	113622000-00748832
40.0 W	A = 790 mm, D = 736 mm	polycarbonate	828/1 047 lx ¹	RL70LE-75 N	113624000-00748835
56.0 W	A = 1 070 mm, D = 1 016 mm	polycarbonate	1 120/1 386 lx ¹	RL70LE-105 N	113626000-00748838
64.0 W	A = 1 210 mm, D = 1 156 mm	Polycarbonate	1 286/1 573 lx ¹	RL70LE-120 N	113628000-00748844

Information about accessories is available on the website: www.waldmann.com

^{*} E_m = medium illuminance; ^{*} E_{max} = maximum illuminance; ¹ measuring field 100 × 100 cm/measuring distance 100 cm; A = luminaire length; D = light emission length

(1 of 1000)

We would like to spotlight the people at Waldmann who do their utmost to create the best possible lighting solutions. Thank you Andreas!



**ENGINEERS
OF LIGHT:
ANDREAS**